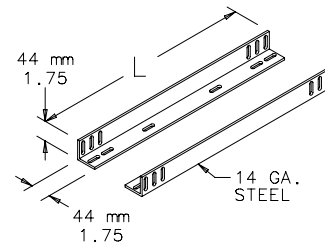


GUIDES **A-T-O**


14 gauge steel chassis guides mount between two pairs of rack-mounting angles that have accessory mounting legs. Guides and mounting hardware are plated. [XSFSG mount on one pair of Type RA rack-mounting angles that have accessory mounting legs.]

BULLETIN: P20



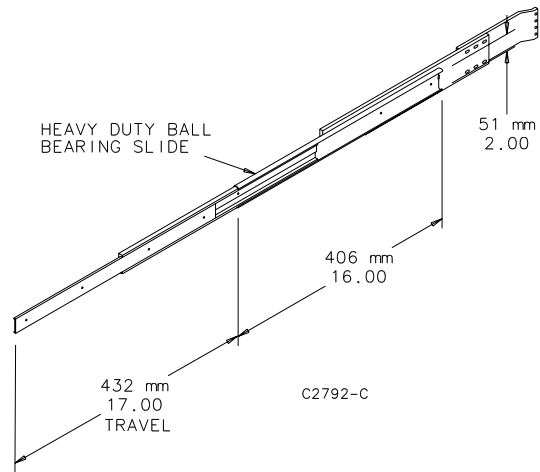
87799603

| Catalog Number | Length in./mm | Rack Units |
|----------------|------------------|------------|
| AG1U5 | 15.00 381.0 | 1 |
| AG1U6 | 21.00 533.4 | 1 |
| AG1U8 | 26.00 660.4 | 1 |

SLIDES **A-T-O**


Heavy-duty ball bearing, plated three-section Slides are 16-in. (406-mm) long and allow 17-in. (423-mm) extension. They are attached to supports that mount between two pairs of rack-mounting angles that have accessory mounting legs. Mounting hardware is furnished. Equipment 16.75-in. (425-mm) wide can be mounted between Slide assemblies installed on 19-in. rack angles. A pair of Slides can support up to 160 lb. at the extended position when load is distributed evenly along the 16-in. (406-mm) Slide length. Requires Rack Angle Adapter Bracket to fit PROLINE. Needs to be used with the Rack Angle Adapter Bracket (PBRAA, PBRAA19 or PBRAA24).

BULLETIN: P20



| Catalog Number | Quantity |
|----------------|----------|
| A16SL2U | 2 |

FAN SPEED CONTROL, RACK-MOUNT



APPLICATION

These Hoffman Fan Speed Controls provide a means to optimize airflow in a cabinet or rack, balancing air volume requirements with noise level and power use. The AFANTSC Panel Mount Fan Speed Control adjusts fan speed automatically based on remote temperature sensor inputs. The A19FANSC 19-in. Rack-Mount Fan Speed Control allows manual control over fan speed. Both units are designed to work with Hoffman 3-, 6- and 10-in. Compact Cooling Fans and with 19-in. fan trays, as well as door- and top-mount fan trays. These fan speed controls are ideal for offices, classrooms and other acoustic noise-sensitive areas.

SPECIFICATIONS

- Continuously variable fan speed control knob with minimum speed adjustment
- Uses 1 RU rack space
- Steel construction
- Two NEMA 5-15R outlets provide power to fan
- Six-foot (1.83-m) power cord plugs into standard 120V 60 Hz outlet

FINISH

AFANTSC: Light-gray polycarbonate control housing
 A19FANSC: RAL 9005 black polyester powder paint

BULLETIN: DTHRM

INDUSTRY STANDARDS

UL 508A Listed; File No. E249700
 cUL Listed per CSA C22.2 No. 14; File No. E249700

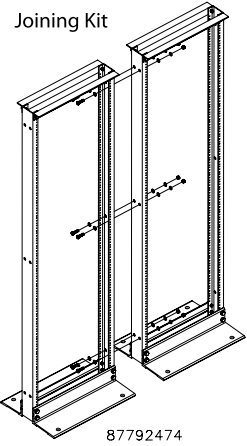
| Catalog Number | Description | Application | Voltage and Frequency | Current Draw | Temperature Settings (C) | Temperature Settings (F) |
|----------------|-------------------------------------|-----------------------------|-----------------------|--------------|--------------------------|--------------------------|
| A19FANSC | 19-in. Rack-Mount Fan Speed Control | Fan speed adjusted manually | 120V, 60 Hz | 4A max. | Continuously variable | Continuously variable |

JOINING KIT

Hardware kit to join two open-frame racks. Made of steel with plated finish.

BULLETIN: DOFRY

| Catalog Number | Description |
|----------------|---------------------------|
| EJ2DR | Joining Kit, Side-to-Side |

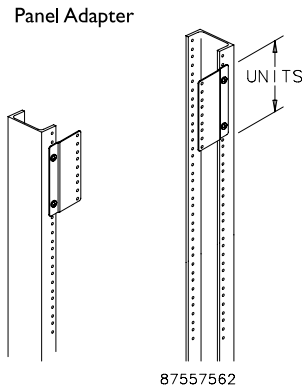


PANEL ADAPTER

Adapts 23-in. open frame rack to accept 19-in. equipment. Offset provides flush mounting surface. Steel with plated finish. Furnished in pairs.

BULLETIN: DACCY

| Catalog Number | Rack Units |
|----------------|------------|
| ERB1U2319 | 1 |
| ERB3U2319 | 3 |
| ERB5U2319 | 5 |



RACK UNIT LABEL



Self-adhesive clear Mylar™ label with white numbers enables numbering along sides of open frame racks or rack angles. Numbers spaced one rack unit apart. Can be used for bottom-up or top-down numbering of rack units to simplify equipment installation. Each label provided in two pieces (numbers 1-29 and 30-58) for easier installation. Two labels per catalog number. Label shown mounted on rack angle.

Mylar is a registered trademark of DuPont Tejin Films.

BULLETIN: DOFRY

| Catalog Number | Installed Length in./mm | Width in./mm |
|----------------|----------------------------|-----------------|
| ARULABEL | 101.50 2578 | .50 13 |

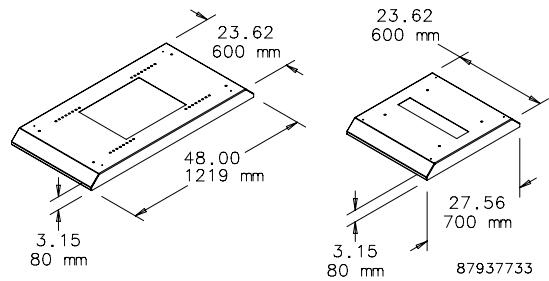
MOBILE BASE FOR OPEN FRAME RACKS



Models for 19-in. 2- and 4-Post Open Frame Racks. Includes four non-locking casters. Will also accept standard levelers. Order catalog number PMBLM12 separately. The rack mounts on the base to provide greater stability with mobility. Made of steel with RAL 9005 black polyester powder paint finish. Mounting hardware included.

BULLETIN: DOFRY

| Catalog Number | Fits |
|----------------|---|
| A19MB600 | 2-post open-frame racks |
| A19MB1000 | 4-post open-frame racks with depth adjustable between 17.7- and 29.5-in. (450- and 750-mm) in 0.98-in. (25-mm) increments |



19-IN. RACK-MOUNT/DESKTOP CASE, TYPE 1



INDUSTRY STANDARDS

NEMA Type 1
IEC 60529, IP20
Exterior Dimensions
EIA 310-D / IEC 297-1
DIN 41494 Part 1

APPLICATION

Desktop cases house circuit boards and other electronic equipment in a rigid framework with easy front and rear access. Rack cases are 19-in. rack mountable with integral mounting provided in the front bezel.

FEATURES

- Removable top and bottom covers attach directly to case framework for maintenance convenience
- Bottom cover has multiple rows of holes for ventilation
- Front bezel includes mounting provisions for 19-in. rack mounting as well as mounting for front panel options for application flexibility
- Top and bottom of framework have mounting provisions for optional support rails for application flexibility. Mounting holes are spaced on 10-mm centers front to back.
- Case framework is assembled for quick installation. Top cover, bottom cover, anti-skid feet and mounting hardware are included.
- Mounting hardware for optional front and rear panels are included with case for installation convenience

SPECIFICATIONS

- One-piece aluminum die cast front bezel and rear bezel are connected front-to-back with aluminum extrusions to form a rigid structural framework
- Sides on 3U- and 4U-tall cases are the aluminum front-to-back extrusions. The 6U-tall case has two aluminum extrusions with a steel middle panel on each side.
- Covers are 1-mm steel and have grounding provisions

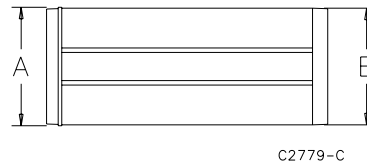
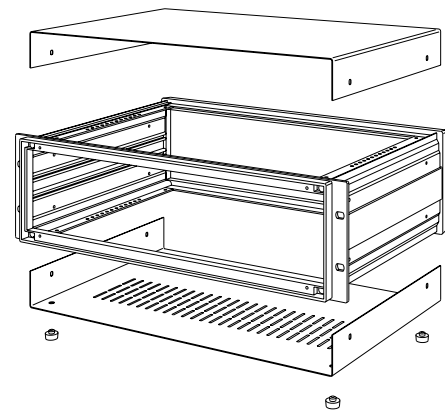
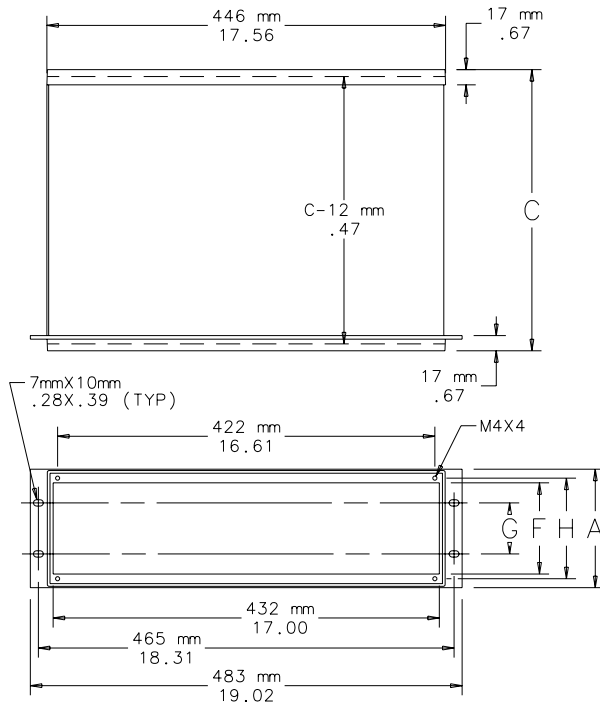
FINISH

Framework has an RAL 7030 stone-gray textured finish. Top and bottom covers have an RAL 7035 light-gray textured finish on the outside and a plated finish on the inside.

BULLETIN: DEC1

Standard Product

| Catalog Number | AxBxC mm/in. | E mm/in. | F mm/in. | G mm/in. | H mm/in. | Rack Units |
|----------------|--|--------------|-------------|-------------|-------------|------------|
| ERC3U4837 | 133 x 483 x 375 5.20 x 19.00 x 14.80 | 131 5.14 | 103 4.04 | 57 2.25 | 110 4.33 | 3 |
| ERC4U4843 | 177 x 483 x 435 7.00 x 19.00 x 17.10 | 175 6.89 | 147 5.77 | 102 4.00 | 155 6.08 | 4 |
| ERC6U4843 | 266 x 483 x 435 10.50 x 19.00 x 17.10 | 264 10.39 | 235 9.27 | 190 7.50 | 243 9.58 | 6 |



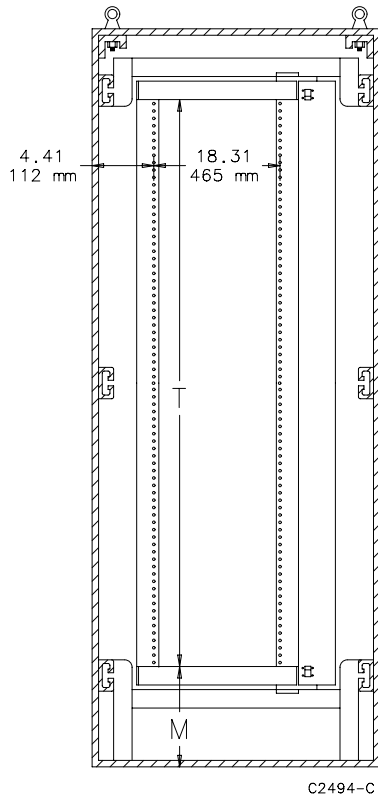
SWING-OUT RACK MOUNTING FRAMES

Full-length 10 gauge swing-out rack mounting frames are available for mounting 19-in. (483-mm) rack mounting equipment. The frame pivots within the enclosure to allow access to the back of the mounted equipment. The frames can be installed in 72.00-in. (1829-mm) and 90.00-in. (2286-mm) high enclosures that are 30.00-in. (762-mm) or 36.00-in. (914-mm) wide. They can be installed in 60.00-in. (1524-mm) or 72.00-in. (1829-mm) wide enclosures if a center panel support is used. Mounting holes are tapped with #10-32 threads spaced per EIA standard. The design features smooth operation and secure positioning anywhere along the horizontal mounting channels. Frame swings from the left side. All frames are white and furnished with plated mounting hardware.

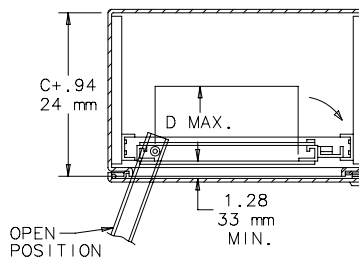
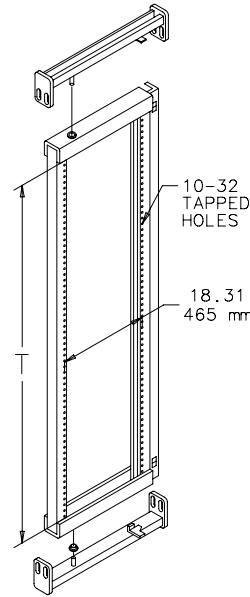
BULLETIN: A80

| Catalog Number | Fits Enclosure | | T in./mm | M in./mm | D max in./mm | Number of Units |
|----------------|----------------------|--|-------------|-------------|-----------------|--------------------|
| | Size A x B in./mm | | | | | |
| A7230SOF19 | 72.06 x 30.06 | | 57.88 | 9.09 | 16.25 | 33 |
| | 1830 x 764 | | 1470 | 231 | 413 | |
| A7236SOF19 | 72.06 x 36.06 | | 57.88 | 9.09 | 24.25 | 33 |
| | 1830 x 916 | | 1470 | 231 | 616 | |
| A9036SOF19 | 90.06 x 36.06 | | 75.28 | 9.34 | 24.25 | 43 |
| | 2287 x 916 | | 1915 | 237 | 616 | |

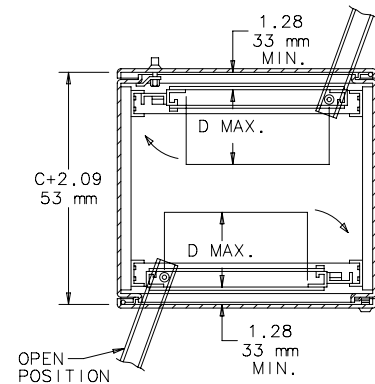
One unit equals 1.75 inches (44mm).



SECTION A-A



SECTION B-B



SECTION B-B

RACK MOUNTING ANGLES - U STYLE (TYPE RA)

For Free-Stand Enclosures, Type 12 (Bulletin A30), Free-Stand Enclosures, Type 4 (Bulletin A4L) and One-Door Free-Stand Fiberglass Enclosures, Type 4X (Bulletin A17).

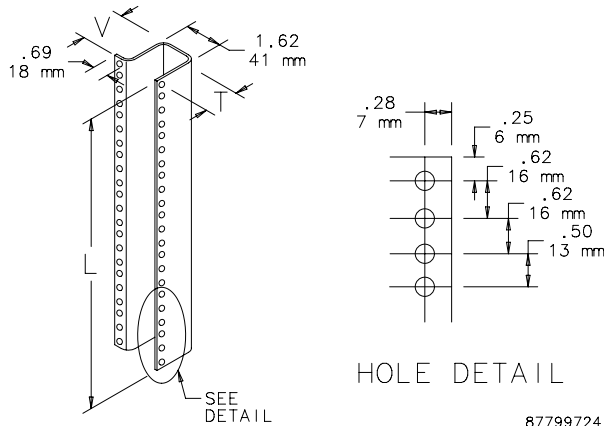
Pairs of full-length rack mounting angles are available for mounting 19-in. (483-mm) and 24-in. (610-mm) rack-mounted equipment. Type RA rack mounting angles are 14 gauge steel with mounting holes .281 in. (7 mm) in diameter and spaced per EIA standard RS-310-D universal spacing. Use clip nut package AN1032 to provide tapped holes at desired locations.

Angles and mounting hardware are plated. All mounting hardware is furnished. Includes two full-length angles.

BULLETIN: A80

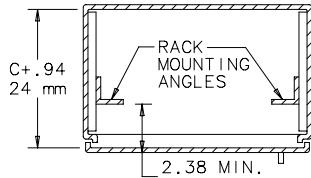
| Catalog Number | Fits Enclosure A x B in./mm | K in./mm | L in./mm | M in./mm | T in./mm | V in./mm | For Rack Size in./mm | Number of Units |
|----------------|-----------------------------------|-------------|---------------|-------------|-------------|-------------|----------------------------|--------------------|
| A60RA19TH | 60.00 x 24.00 60 x 24 | 3.78 96 | 49.00 1245 | 7.78 198 | 1.95 50 | 1.89 48 | 19.00 483 | 28 |
| A72RA19TH | 72.00 x 24.00 1829 x 610 | 3.66 93 | 61.25 1556 | 7.66 195 | 1.95 50 | 1.89 48 | 19.00 483 | 35 |
| A72RA24TH | 72.00 x 30.00 1829 x 762 | 3.66 93 | 61.25 1556 | 7.66 195 | 2.45 62 | 2.39 61 | 24.00 610 | 35 |
| A90RA19TH | 90.00 x 24.00 2286 x 610 | 3.91 99 | 78.75 2000 | 7.91 201 | 1.95 50 | 1.89 48 | 19.00 483 | 45 |

One unit equals 1.75 inches (44 mm).



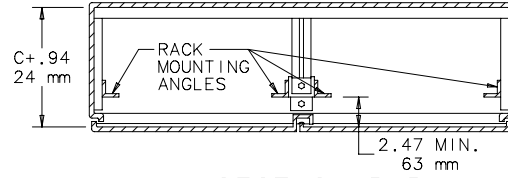
87799724

Rack Mounting Angles Installed in Enclosures



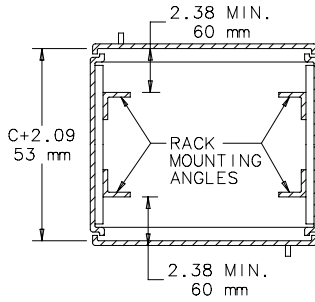
SECTION B-B

Showing rack mounting angles installed in single-door enclosure.



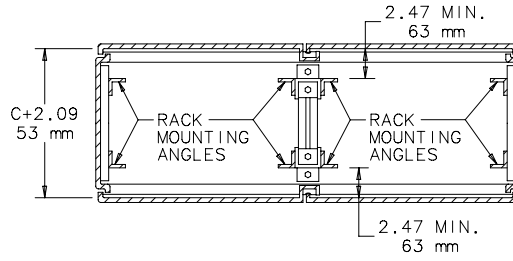
SECTION B-B

Showing two sets of rack mounting angles and center panel supports mounted in two-door enclosure.



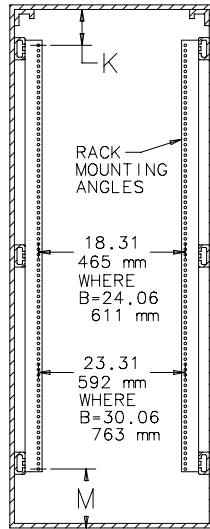
SECTION B-B

Showing two sets of rack mounting angles mounted in single-door dual access enclosure.

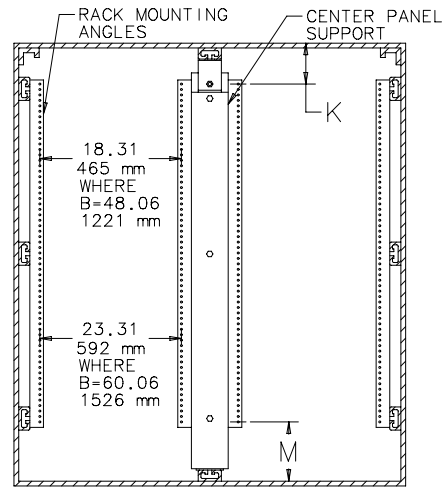


SECTION B-B

Showing four sets of rack mounting angles and two center panel supports mounted in two-door dual-access enclosure.



SECTION A-A



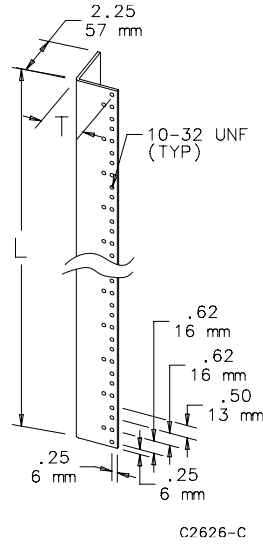
SECTION A-A

C2497-C

RACK MOUNTING ANGLES - L STYLE (TYPE RP)

For Free-Stand Enclosures, Type 12 (Bulletin A30), Free-Stand Enclosures, Type 4 (Bulletin A4L) and One-Door Free-Stand Fiberglass Enclosures, Type 4X (Bulletin A17). Pairs of full-length or half-length rack mounting angles are available for mounting 19-in. (483-mm) and 24-in. (610-mm) rack-mounted equipment. Type RP rack mounting angles are 10 gauge steel with mounting holes tapped #10-32 thread and spaced per EIA standard RS-310-D universal spacing. Angles and mounting hardware are plated. All mounting hardware is furnished.

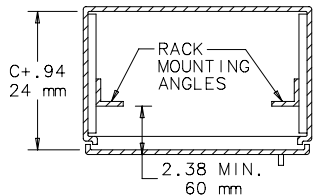
BULLETIN: A80



| Catalog Number | Description | Fits Enclosure A x B in./mm | For Rack Size in./mm | K in./mm | L in./mm | M in./mm | T in./mm | Number of Units |
|----------------|------------------------|-----------------------------------|----------------------------|-------------|---------------|-------------|-------------|--------------------|
| A60RP24F5 | Two full-length angles | 60.00 x 24.00 1524 x 610 | 19.00 483 | 3.78 96 | 49.00 1245 | 7.78 198 | 1.94 49 | 28 |
| A60RP24F6 | Two half-length angles | 60.00 x 24.00 1524 x 610 | 19.00 483 | 3.59 91 | 26.25 667 | 7.59 193 | 1.94 49 | 15 |
| A72RP24F5 | Two full-length angles | 72.00 x 24.00 1829 x 610 | 19.00 483 | 3.66 93 | 61.25 1556 | 7.66 195 | 1.94 49 | 35 |
| A72RP24F6 | Two half-length angles | 72.00 x 24.00 1829 x 610 | 19.00 483 | 3.97 101 | 31.50 800 | 7.97 202 | 1.94 49 | 18 |
| A72RP30F5 | Two full-length angles | 72.00 x 30.00 1829 x 762 | 24.00 610 | 3.66 93 | 61.25 1556 | 7.66 195 | 2.44 62 | 35 |
| A72RP30F6 | Two half-length angles | 72.00 x 30.00 1829 x 762 | 24.00 610 | 3.97 101 | 31.50 800 | 7.97 202 | 2.44 62 | 18 |
| A90RP24F5 | Two full-length angles | 90.00 x 24.00 2286 x 610 | 19.00 483 | 3.91 99 | 78.75 2000 | 7.91 201 | 1.94 49 | 45 |
| A90RP24F6 | Two half-length angles | 90.00 x 24.00 2286 x 610 | 19.00 483 | 4.09 104 | 40.25 1022 | 8.09 205 | 1.94 49 | 23 |

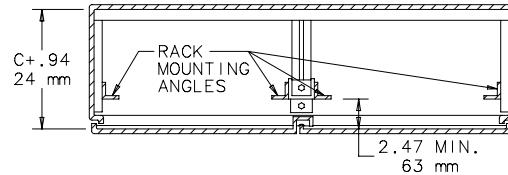
One unit equals 1.75 inches (44 mm).

Rack Mounting Angles Installed in Enclosures



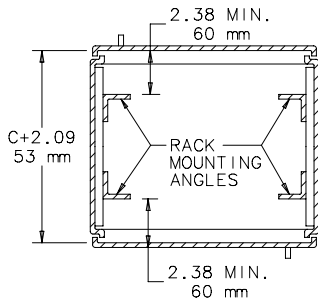
SECTION B-B

Showing rack mounting angles installed in single-door enclosure.



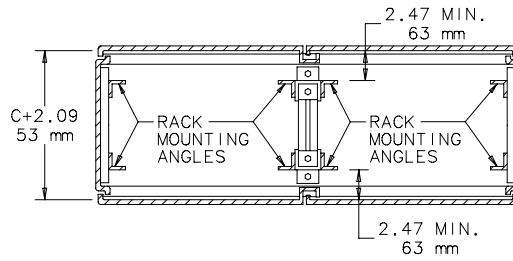
SECTION B-B

Showing two sets of rack mounting angles and center panel supports mounted in two-door enclosure.



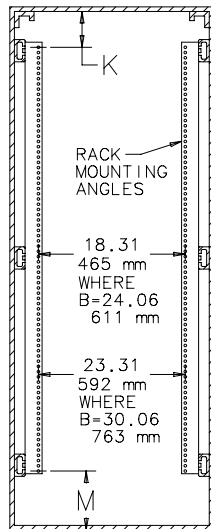
SECTION B-B

Showing two sets of rack mounting angles mounted in single-door dual access enclosure.

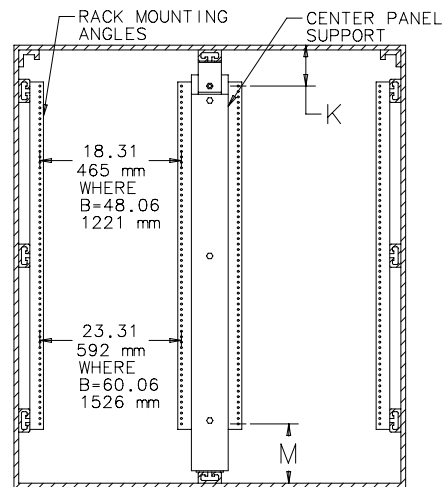


SECTION B-B

Showing four sets of rack mounting angles and two center panel supports mounted in two-door dual-access enclosure.



SECTION A-A



SECTION A-A

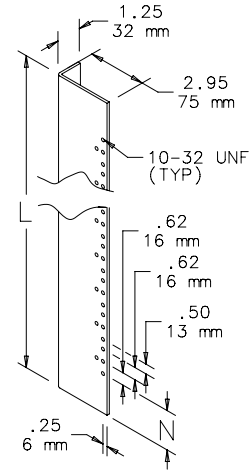
C2497-C

RACK MOUNTING ANGLE KIT - L STYLE

Designed for mounting 19-in. (483-mm) rack-mount equipment in standard 24-in. (610-mm) wide one-door, wall-mount Type 4 and 12 enclosures. Heavy 10 gauge steel angles are tapped with #10-32 threads spaced to meet EIA RS-310-D. To install, drill small holes in the sides of the enclosure and bolt angles in place.

All mounting hardware and instructions are furnished. Sealing washers also are provided to maintain original enclosure standards rating after installation. Rack angles are zinc-plated. External screws are stainless steel. Special sizes, materials and finishes are available on custom order.

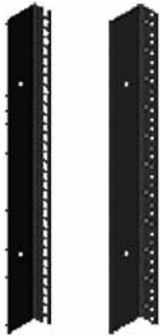
BULLETIN: A80



| Catalog Number | Description | For Enclosure Size A x B in./mm | L in./mm | N in./mm | Number of Units |
|----------------|-------------|---------------------------------|--------------|------------|-----------------|
| ARAK24 | Two Angles | 24.00 x 24.00 610 x 610 | 23.75 603 | 1.62 41 | 12 |
| ARAK30 | Two Angles | 30.00 x 24.00 762 x 610 | 29.75 756 | 2.00 51 | 15 |
| ARAK36 | Two Angles | 36.00 x 24.00 914 x 610 | 35.75 908 | 1.50 38 | 19 |

One unit equals 1.75 inches (44 mm).

19-IN. AND 23-IN. RACK ANGLES



Made of 14 gauge steel with square holes or 12 gauge steel with 10-32 tapped holes. Provides 19- or 23-in. rack spacing depending on frame width. Finished with flat black RAL 9005 polyester powder paint or plated. Furnished in pairs.

BULLETIN: DNCY, DWDH1



| Catalog Number | Rack Spacing | Hole Type | Finish | Use With | Fits Frame Height | Fits Frame Width | Rack Units | L (mm) | L (in.) |
|----------------|--------------|-----------|--------|---------------------------|-------------------|------------------|------------|--------|---------|
| ERA197THLN | 19 in. | Square | Black | Networking Cabinet - SOHO | 700mm | 600mm | 11 | 492 | 19.38 |
| ERA197TPLN | 19 in. | Tapped | Black | Networking Cabinet - SOHO | 700mm | 600mm | 11 | 492 | 19.38 |
| ERA1921TPL | 19 in. | Tapped | Black | Seismic Cabinet | 2100mm | 700mm | 45 | 2003 | 78.87 |
| ERA192321TPL | 19 & 23 in. | Tapped | Black | Seismic Cabinet | 2100mm | 800mm | 45 | 2003 | 78.87 |
| ERA1910TPL | 19 in. | Tapped | Black | Network PC Cabinet | Bottom Section | — | 19 | 848 | 33.37 |